



Member Webinar
**Good to Great: The Power of
Intentional Leadership**
Fox River Church



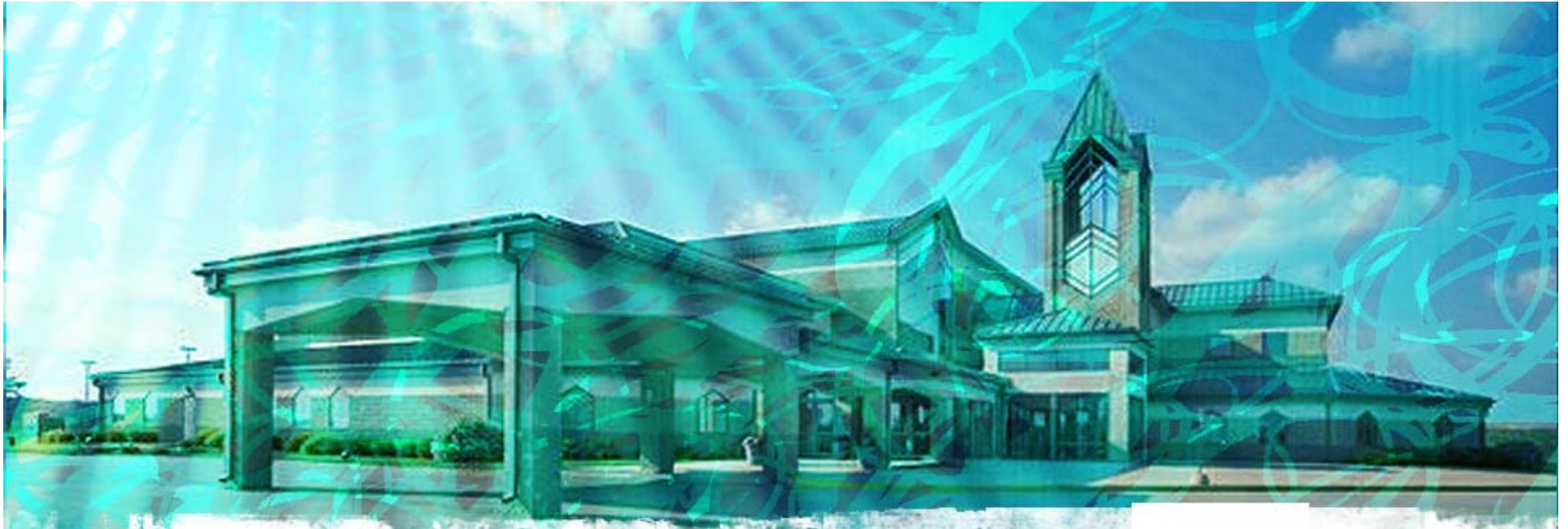
Greg Hawkins

*Executive Pastor,
Willow Creek Community
Church*

Cally Parkinson

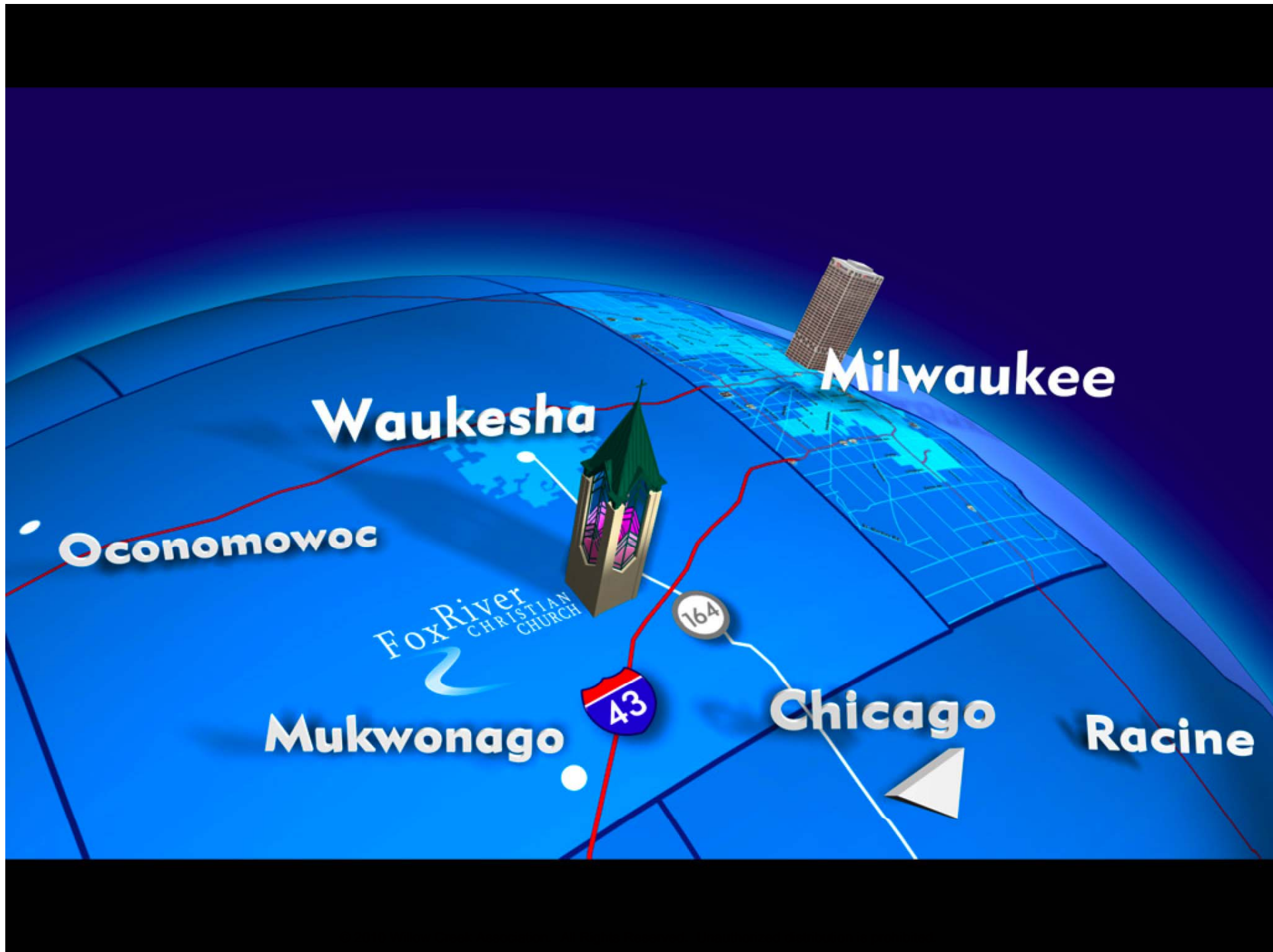
Brand Manager, REVEAL





Fox River
CHRISTIAN
CHURCH

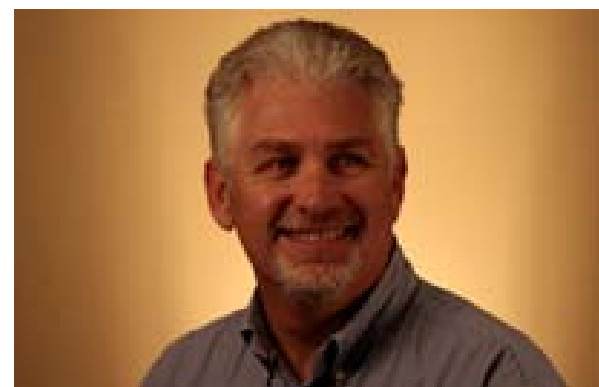




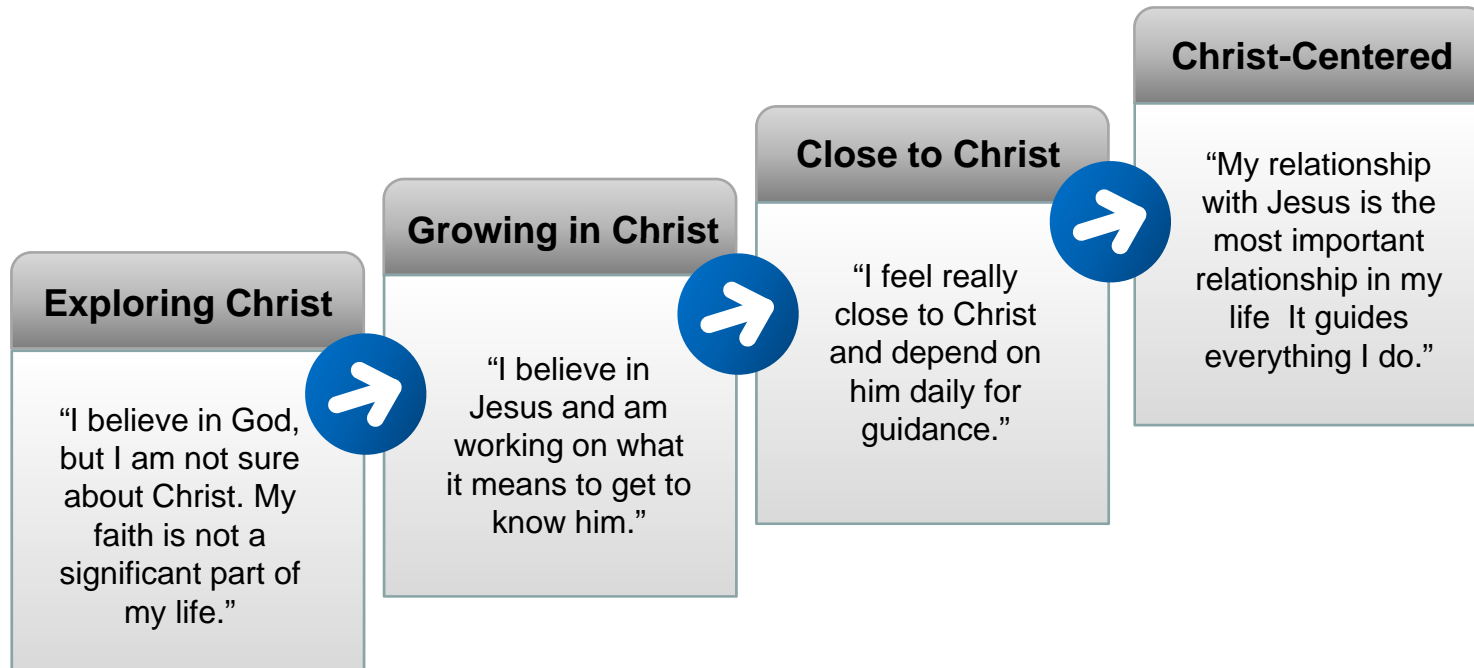


Guy Conn
Senior Pastor

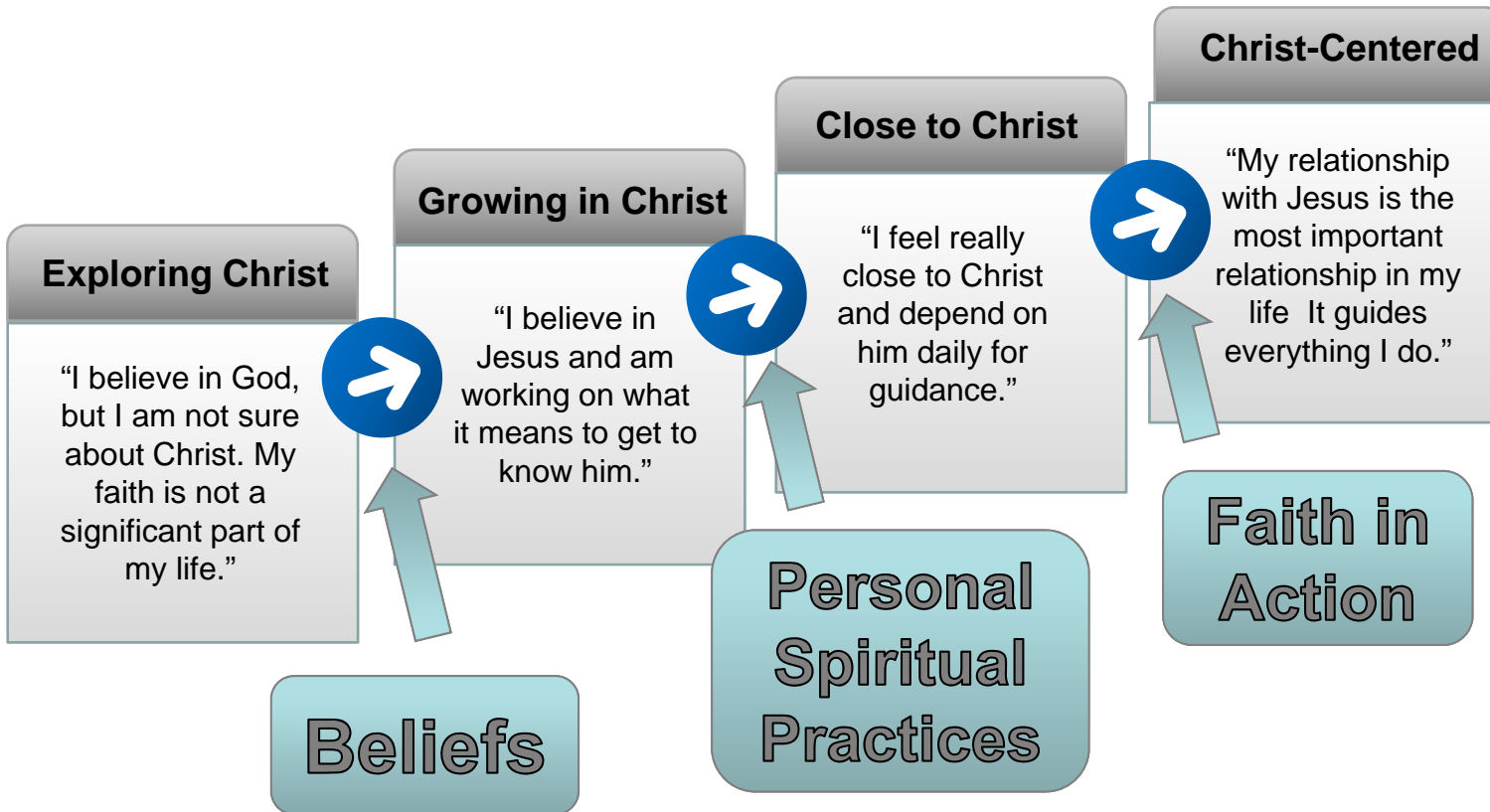
Mark Roberts
Executive Pastor



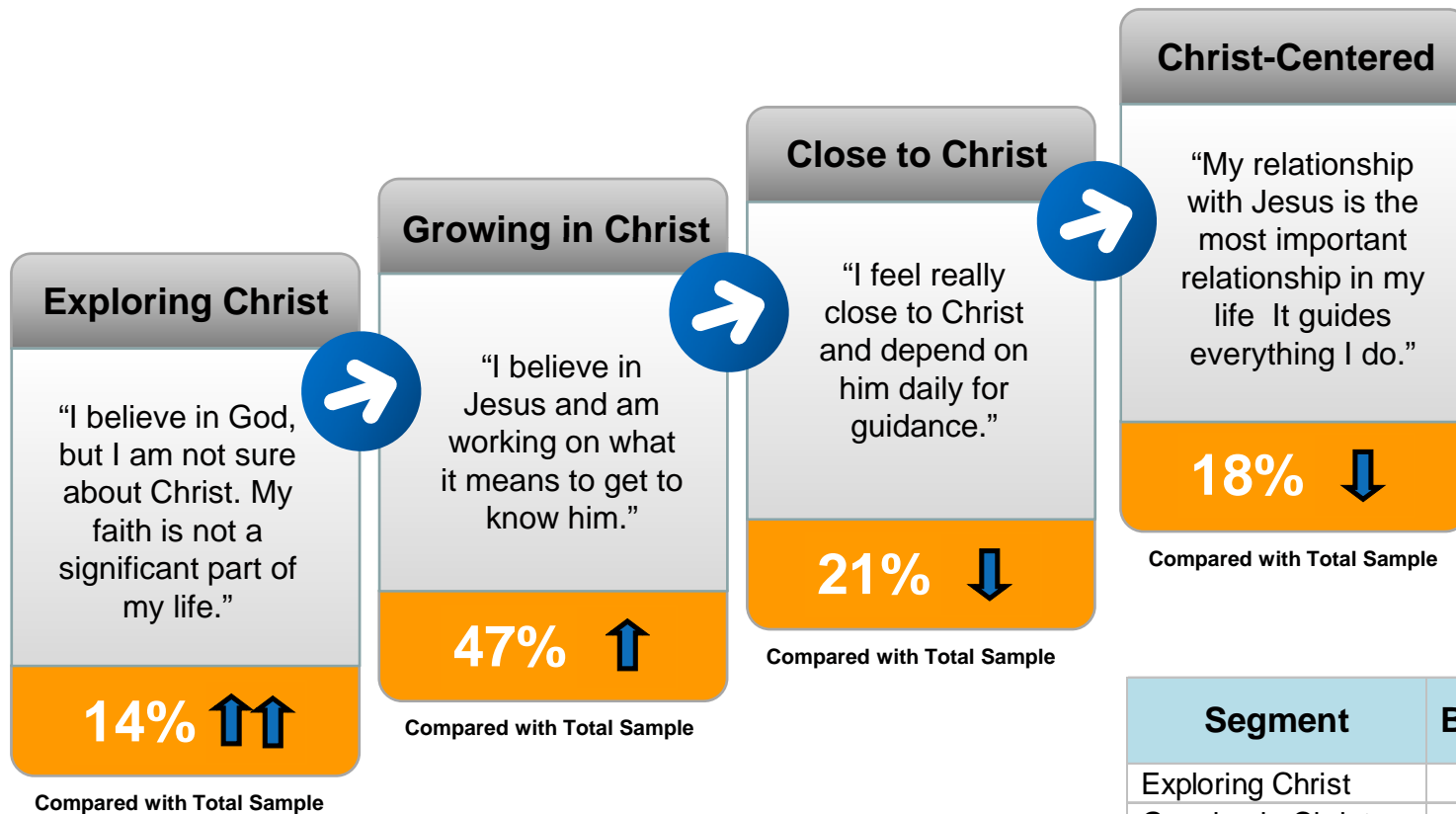
REVEAL Spiritual Growth Continuum



REVEAL Spiritual Growth Catalysts



Fox River Christian Church's Spiritual Profile 2008



Segment	Base Size
Exploring Christ	84
Growing in Christ	281
Close to Christ	125
Christ-Centered	108

Spiritual Continuum Profile

Segment	Spiritual Continuum Profile			
	Wave 1		Wave 2	
	Base Size	Percentage	Base Size	Percentage
Exploring Christ	84	14%	80	15%
Growing in Christ	281	47%	234	44%
Close to Christ	125	21%	130	24%
Christ-Centered	108	18%	90	17%

Green = Increase

Red = Decrease

Personal Spiritual Practices

Personal Spiritual Practices	Total		Exploring Christ		Growing in Christ		Close to Christ		Christ-Centered	
	Wave 1	Wave 2	Wave 1	Wave 2	Wave 1	Wave 2	Wave 1	Wave 2	Wave 1	Wave 2
Base Size	598	534	84	80	281	234	125	130	108	90
Reflection on Scripture <i>(daily)</i>	18%	24%	4%	4%	8%	12%	25%	32%	47%	60%
Bible Reading <i>(daily)</i>	16%	30%	0%	8%	9%	18%	26%	45%	34%	59%
Prayer to Seek Guidance <i>(daily)</i>	44%	47%	21%	23%	32%	38%	61%	55%	72%	79%
Prayer to Confess Sins <i>(daily)</i>	28%	26%	12%	9%	20%	20%	35%	33%	50%	50%
Solitude <i>(several times per week or more)</i>	45%	51%	18%	23%	37%	45%	61%	62%	70%	77%
Tithing <i>(10% or more)</i>	27%	23%	13%	6%	20%	13%	35%	37%	46%	44%

Green = Increase

Red = Decrease

Participation and Satisfaction with Small Groups

Small Groups		Total		Exploring Christ		Growing in Christ		Close to Christ		Christ-Centered	
		Wave 1	Wave 2	Wave 1	Wave 2	Wave 1	Wave 2	Wave 1	Wave 2	Wave 1	Wave 2
Participation	Base Size	598	534	84	80	281	234	125	130	108	90
	1 to 2 times per month or more	33%	51%	15%	24%	33%	49%	43%	63%	38%	63%
Satisfaction	Base Size	219	293	15 [#]	22 [#]	104	126	57	84	43	61
	Top 2 Box (Percent)	54%	58%	40%	36%	51%	57%	56%	65%	65%	59%

Low sample sizes, as indicated with #, are not tested for meaningful differences

Green = Increase
Red = Decrease

Satisfaction with Church's Role in Spiritual Growth

Spiritual Continuum Segment	Overall Satisfaction with the Church's Role in Spiritual Growth			
	Wave 1		Wave 2	
	Base Size	Top 2 Box Percentage	Base Size	Top 2 Box Percentage
Total	598	57%	534	65%
Exploring Christ	84	50%	80	46%
Growing in Christ	281	60%	234	68%
Close to Christ	125	49%	130	67%
Christ-Centered	108	62%	90	71%

Green – Increase

Red = Decrease



A VOICE OF
HOPE

KNOWN BY
LOVE

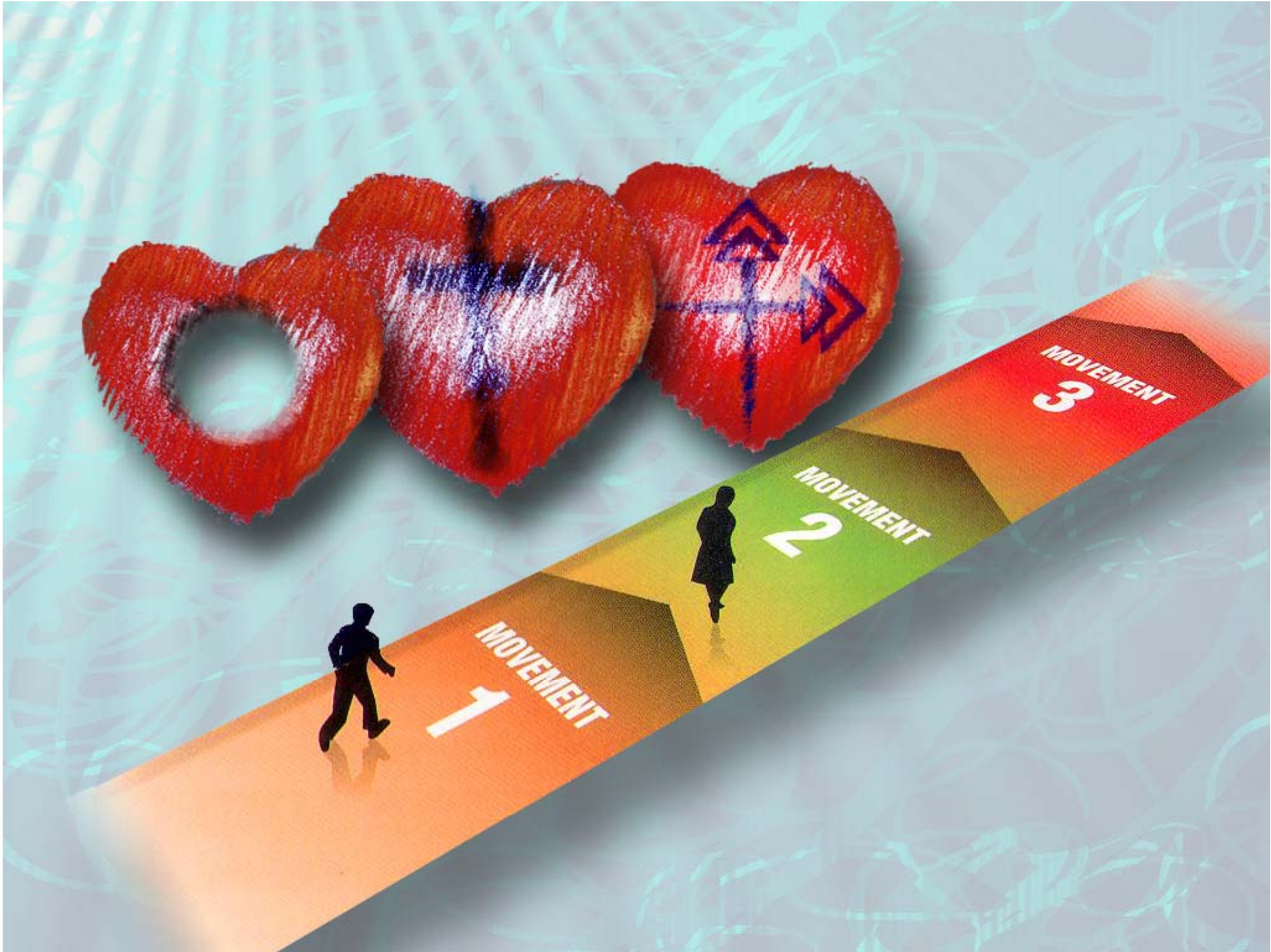
LIVING BY
FAITH



A VOICE OF
HOPE

KNOWN BY
LOVE

LIVING BY
FAITH







check it out!
Journey
www.foxriverchristian.org

4 Great Reasons to Join Journey

1. You will grow spiritually and learn more about the Bible
2. You will meet new friends who are going through the same things you are
3. You will be encouraged and prayed for to help you through tough times
4. You will have a lot of fun!

51 **James**
 General
 Reading and studying the book of James.
 5:00 - 7:00am
 Led by Bruce/Debbie
 13 Weeks
 Genesis
 No Childcare
 Cost: None

52 **Ephesians**
 General
 By Navigators
 This study of the book of Ephesians will help you mature in your Christian faith.
 6:30 - 8:00am
 Led by Paul/Denise
 14 Weeks
 South Waukesha
 Child Friendly
 Cost: \$10

53 **Proverbs**
 General
 This study of the book of Proverbs will help you mature in your Christian faith.
 6:30 - 8:00am
 Led by Elwyn/Denise
 13 Weeks
 Mukwonago
 No Childcare
 Cost: None

54 **The Barbarian Way**
 College 18-23
 By Erwin McManis
 A study looking to help you to become consumed by the presence of a passionate and compassionate God.
 10:30am
 Led by John
 8 Weeks
 FRCC
 No Childcare
 Cost: \$10

FoxRiver
 CHRISTIAN
 CHURCH

REFRIGERATOR RIGHTS

GIVE 'EM

GET 'EM

www.foxriverchristian.org



FoxRiver
CHRISTIAN
CHURCH



Journey

thursday



31
General
Fundamentals of the Faith
By John MacArthur
With topics ranging from "God: His Character and Attributes" to "The Church: Fellowship and Worship," this workbook is ideal to discipline your believers or help more mature Christians deepen their understanding of key doctrines and equip them for evangelism.
7:00 - 8:30pm Led by Joe Shelby
FRCC Paid Childcare* 14 Weeks
Cost: \$10



32
Women
For Women Only
By Sherri Fieldgate
A Bible study designed for married and engaged women that will help you better understand the inner thought life of a man, and apply that knowledge toward making your marriage (and/or) life all God intended it to be. Learn to honor and love your husband in a way he will understand.
6:30 - 8:00pm Led by Christy
FRCC Paid Childcare* 8 Weeks
Cost: \$15



33
Mothers
Conversations You Must Have With Your Daughter
By Vickie Cooney
This Bible study for moms of daughters will help you discover God's role in critical issues you're sure to face and gives you tools to navigate these issues with confidence. Useful for moms of girls middle to college.
6:30 - 8:00pm Led by Erica
FRCC Paid Childcare* 8 Weeks
Cost: \$15



34
Women
I Really Want to Change... So Help Me God
By James McDonald
This Bible study explains how we can be changed to be more Christ-like through God's power. It is about life transformation and gives practical and biblical guidance on how to begin this life-changing journey.
6:30 - 8:30pm Led by Diane Kim
FRCC Paid Childcare* 12 Weeks
Cost: \$15

35
Women



What Happens When Women Say Yes to God
By Lynn Terkstra
Through biblical insights, this study shows you how to partner with God in everything you do. You'll learn to discern his voice, follow his direction, and discover a life of joy and purpose.
7:00 - 8:30pm Led by Jenny
FRCC Paid Childcare* 9 Weeks
Cost: \$10

36
Women



Father: It's Tough Being a Woman
By Beth Moore
This study looks at the Old Testament story of Esther as a profile in courage and contains many modern parallels for today's women.
6:30 - 8:30pm Led by Shirley
FRCC Paid Childcare* 12 Weeks
Cost: \$15

37
Mothers



The Bath Tub is Overflowing but I Feel Drained
By Lynn Terkstra
This study will help moms find practical ideas to give you more encouraging help from God's word and plenty of empathy from one mom to another.
6:30 - 8:00pm Led by Lani
FRCC Paid Childcare* 9 Weeks
Cost: \$10

38
Women



Father: It's Tough Being a Woman
By Beth Moore
This study looks at the Old Testament story of Esther as a profile in courage and contains many modern parallels for today's women.
6:30 - 8:30pm Led by Britta
FRCC Paid Childcare* 12 Weeks
Cost: \$15

39
Men



Gospel of John
This group will be studying the book of John directly from the Bible. We will be discussing God's message to the world through the book of John.
7:00 - 8:30pm Led by Lori
FRCC Paid Childcare* 12 Weeks
Cost: None



Journey

FoxRiver
CHRISTIAN
CHURCH

winter/spring catalog 2010

FoxRiver
CHRISTIAN
CHURCH







READ IT.
LEARN IT.
LIVE IT.

THE NEW TESTAMENT CHALLENGE

FoxRiver
CHRISTIAN
CHURCH

WWW.FOXRIVERCHRISTIAN.ORG

New Testament Challenge

- Week 1**
 - Oct 5 - Matthew 1-2, Acts 1-3
 - Oct 6 - Matthew 3-4, Acts 4-6
 - Oct 7 - Matthew 5-6, Acts 7-9
 - Oct 8 - Matthew 7-8, Acts 10-12
 - Oct 9 - Matthew 9-10, Acts 13-15
 - Oct 10 - Matthew 11-12, Acts 16-18
 - Oct 11 - Matthew 13-14, Acts 19-21
- Week 2**
 - Oct 12 - Matthew 15-16, Acts 22-24
 - Oct 13 - Matthew 17-18, Acts 25-27
 - Oct 14 - Matthew 19-20, Acts 28
 - Oct 15 - Matthew 21-22, Romans 1-3
 - Oct 16 - Matthew 23-24, Romans 4-6
 - Oct 17 - Matthew 25-26, Romans 7-9
 - Oct 18 - Matthew 27-28, Romans 10-12
- Week 3**
 - Oct 19 - Mark 1-2, Romans 13-15
 - Oct 20 - Mark 3-4, Romans 16
 - Oct 21 - Mark 5-6, 1 Corinthians 1-2
 - Oct 22 - Mark 7-8, 1 Corinthians 3-4
 - Oct 23 - Mark 9-10, 1 Corinthians 5-7
 - Oct 24 - Mark 11-12, 1 Corinthians 8-10
 - Oct 25 - Mark 13-14, 1 Corinthians 11-13
- Week 4**
 - Oct 26 - Mark 15-16, 1 Corinthians 14-16
 - Oct 27 - Luke 1-2, 2 Corinthians 1-3
 - Oct 28 - Luke 3, 2 Corinthians 4-6
 - Oct 29 - Luke 4, 2 Corinthians 7-9
 - Oct 30 - Luke 5, 2 Corinthians 10-11
 - Oct 31 - Luke 6, 2 Corinthians 12-13
 - Nov 1 - Luke 7, Galatians 1-3
- Week 5**
 - Nov 2 - Luke 8, Galatians 4-6
 - Nov 3 - Luke 9, Ephesians 1-3
 - Nov 4 - Luke 10, Ephesians 4-6
 - Nov 5 - Luke 11, Philippians 1-2
 - Nov 6 - Luke 12, Philippians 3-4
 - Nov 7 - Luke 13, Colossians 1-2
 - Nov 8 - Luke 14, Colossians 3-4
- Week 6**
 - Nov 9 - Luke 15, 1 Thessalonians 1-3
 - Nov 10 - Luke 16, 1 Thessalonians 4-5
 - Nov 11 - Luke 17, 2 Thessalonians 1-3
 - Nov 12 - Luke 18, 1 Timothy 1-3
 - Nov 13 - Luke 19, 1 Timothy 4-6
 - Nov 14 - Luke 20, 2 Timothy 1-2
 - Nov 15 - Luke 21, 2 Timothy 3-4
- Week 7**
 - Nov 16 - Luke 22, Titus 1-3
 - Nov 17 - Luke 23, Philemon 1
 - Nov 18 - Luke 24, Hebrews 1-2
 - Nov 19 - John 1-2, Hebrews 3-4
 - Nov 20 - John 3-4, Hebrews 5-7
 - Nov 21 - John 5-6, Hebrews 8-10
 - Nov 22 - John 7-8, Hebrews 11-13
- Week 8**
 - Nov 23 - John 9-10
 - Nov 24 - John 11-12, James 1-3
 - Nov 25 - John 13-14, James 4-5
 - Nov 26 - John 15-16, 1 Peter 1-2
 - Nov 27 - John 17-18, 1 Peter 3-5
 - Nov 28 - John 19-20, 2 Peter 1-3
 - Nov 29 - John 21, 1 John 1-5
- Week 9**
 - Nov 30 - 2 John 1, 3 John 1, Jude 1
 - Dec 1 - Revelation 1-4
 - Dec 2 - Revelation 5-8
 - Dec 3 - Revelation 9-12
 - Dec 4 - Revelation 13-16
 - Dec 5 - Revelation 17-19
 - Dec 6 - Revelation 20-22
- Week 10**
 - Christmas Perry Week

FoxRiver
CHRISTIAN
CHURCH

FoxRiver
CHRISTIAN
CHURCH

Thanks for coming!

Visit WillowCreek.com/Membership to:

- Download webinar slides and recording (*under “Online Training”*)
- Access recordings from a series of REVEAL workshops (*under “Audio Downloads”*)
- Register for the next two webinars (*under “Online Training”*)
 - “Putting the Local Back in Local Church” on May 19
 - “Getting Your Whole Congregation Growing and Engaging Scripture” on June 23