

## Doxology

© 1993 Guidum Music and Chunchu Music

*Accessible. Powerful. Practical.*

INCLUDES PARTS FOR:

CONTEMPORARY RHYTHM  
SECTION



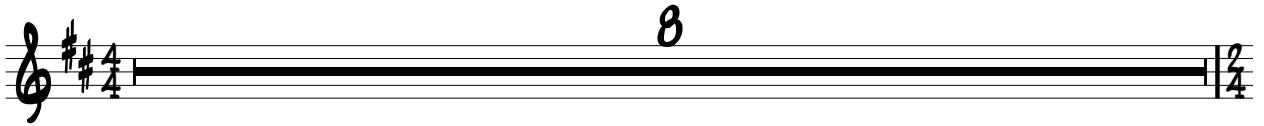
Note: Purchase of this product entitles your church and/or non-profit organization to photocopy the enclosed material for each musical performer in your church or non-profit organization only. The material is non-transferable between churches or organizations and cannot be resold.

AVAILABLE AT:

**WillowCharts.com**

800.570.9812

# DOXOLOGY



**A** VERSE ONE

9 B<sup>M</sup>7(11) E<sup>M</sup>7 F#7 B<sup>M</sup>7(11)

O SHOUT UN - TO GOD WITH JOY IN ALL THE EARTH COME TO - GE

12 E<sup>M</sup>7 A<sup>7</sup>SUS A<sup>7</sup>

— THER BE - FORE HIM WITH GLAD - NESS AND WITH PRAISE

13 D<sup>M</sup>A<sup>7</sup> C#<sup>M</sup>7 F#7+ B<sup>M</sup>7 A<sup>7</sup>SUS A<sup>7</sup> D#<sup>M</sup>7(b13) D<sup>M</sup>A<sup>7</sup>

— KNOW THAT THE LORD HAS MADE US WE ARE HIS A - LONE

16 G<sup>M</sup>A<sup>7</sup> C#<sup>M</sup>7 C<sup>13</sup> B<sup>M</sup>7 F#7SUS F#7

SING - ING HIS PRAI - SES NOW AND EV - ER MORE COME GA -

**A9** FIRST X. VERSE TWO  
ON D~~S~~, TACET FOR SOLO

18 B<sup>M</sup>7(11) E<sup>M</sup>7 F#7 B<sup>M</sup>7(11)

THER BE - FORE HIS THRONE AND PRAISE HIS NAME LORD OF MER



MASTER RHYTHM  
IN B MINOR

# DOXOLOGY

ABRAHAM & LYN LABORIEL  
© 1993 ALL RIGHTS RESERVED

**INTRO**

BASS DRUM

Measures 1-3 of the Bass Drum and Treble Clef. The Bass Drum part consists of quarter notes on the 2nd and 4th lines of the staff, with rests on the 1st and 3rd lines. The Treble Clef part consists of eighth notes on the 1st and 2nd lines, with rests on the 3rd and 4th lines. The time signature is 4/4.

B. D.

Measures 4-5 of the Bass Drum and Treble Clef. The notation is identical to measures 1-3. The time signature is 4/4.

B. D.

Measures 6-7 of the Bass Drum and Treble Clef. The notation is identical to measures 1-5. The time signature is 4/4. The text "DRUMS CONTINUE SIMILE" is written above the Treble Clef staff.

8

Measures 8-9 of the Treble Clef. Measure 8 contains a quarter note on the 2nd line, followed by a half note on the 3rd line, and a quarter note on the 4th line. Measure 9 contains a quarter note on the 2nd line, followed by a half note on the 3rd line, and a quarter note on the 4th line. The time signature is 4/4. Above the staff, the following chords are indicated: C#MI7(b13), CMA9b5, AMI11/9, F#MI11/9, and BMI11/9. The text "DRUM FILL" is written above the staff. The piece ends with a double bar line and a 4/4 time signature.

8 FLAT PART

# DOXOLOGY

ABRAHAM & LYN LABORIEL  
© 1993 ALL RIGHTS RESERVED

## INTRO

7

8

D#MI7b13 DMA9/5 BMI11/9 G#MI11/9 C#MI11/9 (DRUM FILL)

## A VERSE ONE

10

C#MI7(11) F#MI7 G#7 C#MI7(11)

12

F#MI7 B7sus B7 EMI7 D#MI7 G#7+

14

C#MI7 B7sus B7 E#MI7(b13) EMI7

16

AMA7 D#MI7 D13 C#MI7 G#7sus G#7

# DOXOLOGY

ABRAHAM & LYN LABORIEL  
© 1993 ALL RIGHTS RESERVED

**CHORUS**

8MI7      B7      EMI7

1      2

PRAISE    GOD      FROM    WHOM      ALL      BLES - SINGS      FLOW

3      8MI7      F#7      G7    F#7    G7    F#7

3      4

—      PRAISE    HIM      ALL      YE    CREA -    TURES      HERE      BE -    LOW

5      B7sus      B7      EMI7

5      6

—      PRAISE    HIM      A -    BOVE      ALL    YE    HEA -    VEN      LY      HOSTS

7      8MI7      F#7      G7    F#7    G7    F#7      8MI7

7      8

—      PRAISE    FA -    THER    SON      AND      HO -    LY      GHOST.

**FINE**

# DOXOLOGY

## ENGLISH

1 **B<sub>M</sub>I<sup>7</sup>** **B<sup>7</sup>** **E<sub>M</sub>I<sup>7</sup>**



PRAISE GOD FROM WHOM ALL BLES-SINGS FLOW

3 **B<sub>M</sub>I<sup>7</sup>** **F<sup>#</sup>7** **G<sup>7</sup>** **F<sup>#</sup>7** **G<sup>7</sup>** **F<sup>#</sup>7**



PRAISE HIM ALL YE CREA - TURES HERE BE - LOW

5 **B<sup>7</sup>SUS** **B<sup>7</sup>** **E<sub>M</sub>I<sup>7</sup>**



PRAISE HIM A - BOVE ALL YE HEA - VEN LY HOSTS

7 **B<sub>M</sub>I<sup>7</sup>** **F<sup>#</sup>7** **G<sup>7</sup>** **F<sup>#</sup>7** **G<sup>7</sup>** **F<sup>#</sup>7** **B<sub>M</sub>I<sup>7</sup>**



PRAISE FA - THER SON AND HO - - LY GHOST.

## ESPAÑOL

10 **B<sub>M</sub>I<sup>7</sup>** **B<sup>7</sup>** **E<sub>M</sub>I<sup>7</sup>**



AL PA - DRE AL HI - - JO Y AL ES - PI - RI - TU

12 **B<sub>M</sub>I<sup>7</sup>** **F<sup>#</sup>7** **G<sup>7</sup>** **F<sup>#</sup>7** **G<sup>7</sup>** **F<sup>#</sup>7**



A - LA - BAN - ZAS Y GRA - CIAS A - MOR Y VER - DAD

14 **B<sup>7</sup>SUS** **B<sup>7</sup>** **E<sub>M</sub>I<sup>7</sup>**



AL PA - DRE AL HI - - JO Y AL ES - PI - RI TU

16 **B<sub>M</sub>I<sup>7</sup>** **F<sup>#</sup>7** **G<sup>7</sup>** **F<sup>#</sup>7** **G<sup>7</sup>** **F<sup>#</sup>7** **B<sub>M</sub>I<sup>7</sup>**



CIEL-O Y TIER - RA A - LA - BAN AL DIOS DE BON - DAD